

Struts

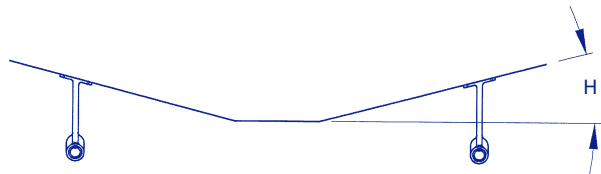
Our struts are cast of 70 manganese bronze and precision machined to ABYC and Navy standards. We install a rubber bearing, locked in place with two stainless steel set screws. To allow boatyards to drill struts to fit existing holes in vessels under repair, our factory does not drill mounting holes unless specified.

We manufacture single leg struts (straight base and port/starboard angled bases), V- struts, and competition ski boat struts.

The best way to ensure a satisfactory replacement is to send us the old strut, no matter how bent or broken. If this is not possible, please supply the following information:

Base Angle

For twin-screw vessels—(does not apply to single prop boats.) Please specify **H**, Hull Angle and which side, port or starboard, you are ordering.



General Specs

- S** = Shaft Diameter
- D** = Drop at aft end
- L** = Barrel Length
- A** = Shaft Angle
- B** = Back Sweep

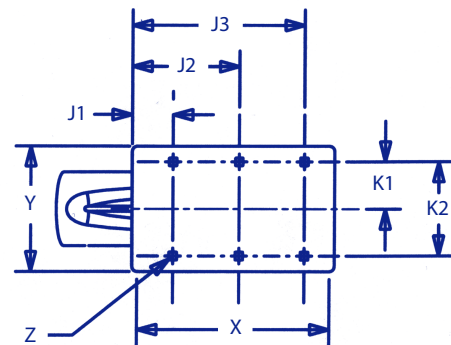
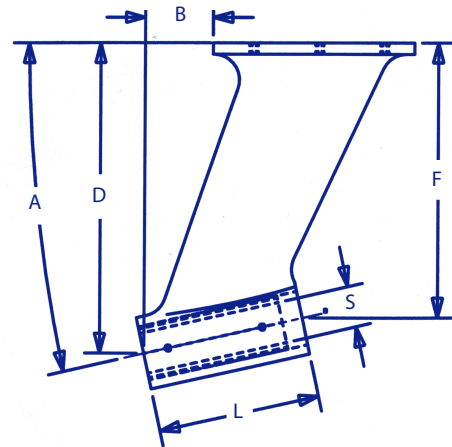
Base Dimensions

- X** = Length
- Y** = Width

Hole Pattern (Factory drilled holes are optional)

- J1, J2, J3, K1, K2**

If shaft angle is not known, contact dealer or manufacturer. As a last resort, if dealer or manufacturer is not available, supply the above dimensions along with **F**, Drop at forward end. This method is not precise and should only be used if shaft angle cannot be determined any other way.



Z = Normal Diameter of Fasteners
 (We will drill for clearance)

Specify type of hole: Plain, Counter-sunk, Broached (square)

Typical Tournament Ski Boat Strut

